

- To check device status, press button once:
Light on = Base mode
Blue light on = Boost mode
Light flashes 3 times = Device locked.

Note: Red light flashing fast 20 times = Device error.

Quick start

- 1 Remove all packaging
- 2 Remove plastic plug
- 3 Vape.



Important product use information



Do not use around flammable liquids or gases.



Do not use if damaged.



Never leave in direct sunlight or near heat sources.



Keep Vuse products dry*.

- *We recommend to keep your device dry during use and storage.
- Each device is designed for single use. You must not attempt to refill as this may lead to leakage and damage your device.
- Vuse GO 5000 Zero is a rechargeable device containing a non-replaceable lithium-ion polymer battery.
- Your Vuse GO 5000 Zero device is designed to operate within a recommended temperature range of 0 - 35°C. If your device is operated outside of this temperature range the performance may be intermittent, device may stop working or it could be damaged.
- Do not use your device at altitudes 3000 meters above sea level.

Battery charging

- Pulsing red light = Battery between 0%-50%
 - Pulsing light = Battery between 50%-80%
 - Solid light = Battery above 80%
- Note:
- The light will stay on during charging.
 - The light will switch off when battery is fully charged.

When to charge your Vuse GO 5000 Zero



If your Vuse GO 5000 Zero stops producing vapour and the device is not yet empty, check that your device is fully charged.

- When the light pulses 10 times during use, the battery level is low. You can still vape.
- When the red light flashes 10 times during use, the battery is depleted. You need to charge your device.



Connect the supplied USB-C charging cable to the device. Connect the other end to a suitable USB charging port / station. It should take no longer than 1.5 hours to fully charge your Vuse GO when using the supplied charging input.

VUSE CARE
customer services
XXXXXXXXXX
XXXXXXXXXX

Product made in China.

Manufactured by: Nicoventures Trading Ltd.,
1 Water Street, London, WC2R 3LA, UK.
Imported by: British American Tobacco UK Ltd.,
4th Floor, Building 7, Chiswick Park,
Chiswick High Road, London, W4 5YG, UK.
T: +44 (0) 800 1337 350



Tell us what you want next



Model number: V750 Series

VU_XL_002_0_5K_ZERO_ES_LFD10

VUSEGO
5000 ZERO

USER GUIDE

Thank You
for choosing Vuse



Tested by scientists



Our Planet matters



Responsibility matters

Join the positive change and responsibly dispose of your Vuse GO device.
Discover how at vuse.com.

Read before use. Keep this guide for future reference.

Important safety information

- **Always** use this product in accordance with these manufacturer's instructions.
- Children **shall not** play with the device. Cleaning and user maintenance **shall not** be carried out by children.
- Immediately stop use of this product and seek medical advice if you experience any of the following: development of an irregular heart beat; allergic reaction such as rash, itching or swelling of the tongue, mouth or throat; feeling faint; nausea; headache; or any other unusual or adverse effect.
- **Do not** drag, crush, pierce, incinerate or immerse the device in water.
- **Do not** insert foreign objects into the device.
- Never leave your device unattended while its charging.
- Rating input of general charging cable is 5VDC/1A.
- This product should only be connected to a safety extra low voltage (SELV) circuit rated 5VDC, 0.5A. Using an AC/DC adaptor with a current output lower than this will result in a slower charger time.
- Adhere to all safety information as detailed in the user guide of the AC/DC adaptor that you are using.
- Protection provided by the equipment may be impaired if used in a manner not specified by the manufacturer.
- **Do not** use e-cigarettes when you, or anyone in the vicinity, is using an oxygen tank.
- If you have any queries or doubts about the use of your Vuse GO 5000 Zero or any other Vuse products, please contact the Vuse Customer Care Team.
- **Do not** use your device at altitudes 3000 metres above sea level.
- If batteries are damaged or leaking, avoid contact with the skin or eyes. If this occurs, immediately rinse well with water and seek medical care.
- **Contains small parts. Keep away from children.**

This product is not suitable for use by:

- Persons under the age of 18.
- Persons who are allergic/sensitive to nicotine and any other listed ingredients.
- Pregnant or breast-feeding women.
- Persons who should avoid using tobacco or nicotine products for medical reasons.
- Persons with an unstable heart condition, severe hypertension or diabetes.

18+

This product is not intended for use by persons with reduced sensory, physical, or mental capabilities, or lack of experience and knowledge, unless they have been given supervision or instruction concerning use of the product by a person responsible for their safety. Never keep loose batteries in your pocket, clothing, nor bags, particularly next to keys or coins to avoid short circuiting the battery.

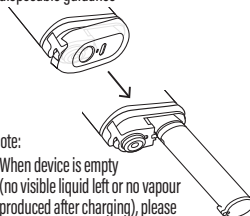
KEEP OUT OF REACH OF CHILDREN AND ANIMALS. THIS PRODUCT MAY BE HAZARDOUS TO HEALTH. NOT RECOMMENDED FOR NON-SMOKERS. Call a POISON CENTRE or doctor/physician if you feel unwell.

Removable Battery for Recycling

1. Firmly press battery access button



2. Pull to remove battery module and follow disposable guidance



Note:

- When device is empty (no visible liquid left or no vapour produced after charging), please remove battery and follow guidance for disposal.

- Do not remove battery during use or before device stops producing vapour.
- If bottom cover accidentally falls off during normal use, simply click back into place. There should be no impact on device.
- Keep the battery out of the reach of children.
- After user has finished using this product, please detach the battery module as per the following steps and safely dispose of according to local regulation.

Disposal and Recycling

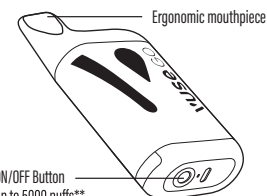
Electrical and electronic goods and batteries should not be disposed of as part of regular household waste, but should be separately collected for recovery and recycling.



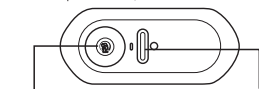
We are committed to minimising our impact on the environment – please see our website, vuse.com, for more information on how to dispose of our Vuse products and details of our recycling program and how to return used products to us.



Know your Vuse GO 5000 Zero



**Based on laboratory testing of newly manufactured Vuse GO 5000 Zero including recharging at a puff duration of one second (in base mode) and may vary depending on individuals' usage behaviour. For further information see (EM) unt of FAQs with puff count narrative)



- To switch from Base to Boost mode, long press button for 1.5 seconds (blue light will turn on).
- To switch back to Base mode, long press button again. (Light will turn on).
- To lock and unlock device, press button 3 times quickly. Lock device when left unattended.